



# **Watershed Recreation Management Planning Feasibility Study Update**

**June 12, 2025**





# Agenda

- Watershed Recreation Management Planning Feasibility Study
- Recently Completed Efforts
- Road & Trail Management Plan
  - Past Work
  - Current Work
  - Plan Update
- Next Steps



# Planning Background

E- Bike  
Workshop  
December  
2018

## E-Bike CAC Public Workshops

E-Bike CAC Charter & Process

Regulations & E-Bike Technology

RTMP and Watershed Environmental Setting

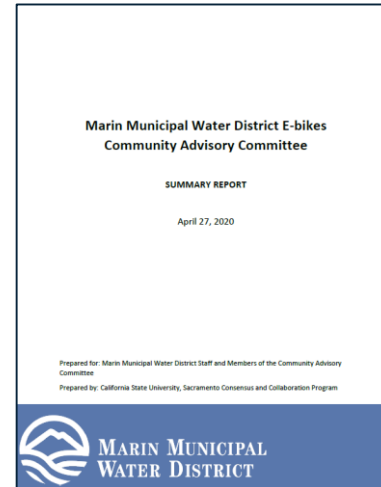
E-Bike Use & Trail Sharing (Slow and Say Hello)

Battery Technology

Enforcement data & bicycle use on the watershed

E-Bike CAC Recommendation & Report

Stakeholder meetings



Initial Scoping  
Workshop  
May 2021 &  
June 2021

Stakeholder meetings

## WRMPFS Public Workshops

Areas of Interest, Issues, + Desired Conditions

Visitor Census Survey + Biological Considerations

Stewardship Programs

Visitor Management

Watershed Facilities

Adaptive Management

Stakeholder meetings



Watershed  
Visitor Survey  
August 2022 -  
November 2022

Stakeholder meetings

September 2019 – April 2020

June 2022 – April 2023



# Azalea Hill Trail Restoration Project

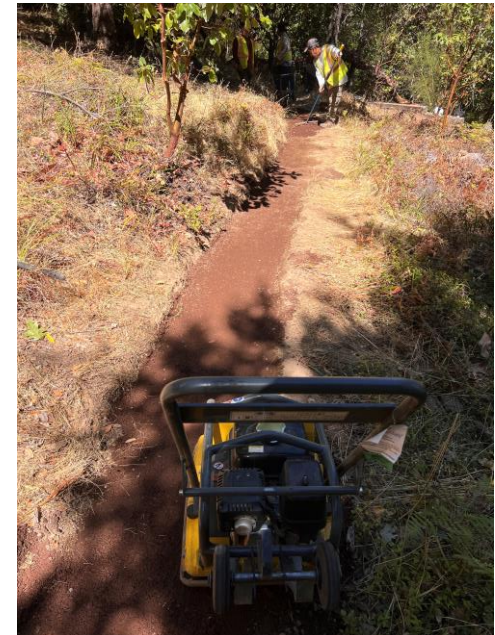
- Liberty Gulch multi-use trail opened on May 1, 2025



Liberty Gulch segment



Azalea Hill hiking route





# National Trails Day Event on June 7<sup>th</sup>

## ➤ Cataract Trail Stewardship Volunteer Event





# Other Interpretive and Volunteer Events

## March-June

- Turtle Observers
- Frog Docent
- Trail Stewardship Events
- Habitat Restoration Events
- Guided Wildlife Walk
- Fishing with a Ranger
- Nature Journaling
- Earth Day-Habitat Restoration
- TOGETHER Bay Area Conference Field Trip
- California Wildfire & Forest Resilience Task Force Meeting Field Trip



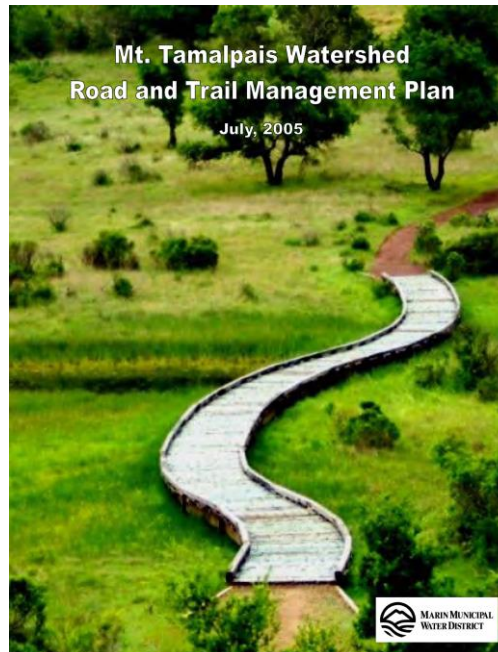
# E-Bike Class I Pilot Program

**Pilot Period July 1, 2025 - July 31, 2027**

Data collection effort:

- A. Trail counters: Installed trail counters at key entrances to collect data to understand the approximate number of bikes on the watershed.
- B. Incident Reporting: Adding additional signage at main kiosks with information about how to report incident of concerns.
- C. Visitor Experience: Conduct two rounds of visitor surveys to understand perceptions, experiences and conflicts over the E-Bike Pilot period.
- D. Social Trails: Continue monitoring use of social trails.
- E. Early Detection Rapid Response: Continue EDRR monitoring along Fire Roads.
- F. Bat Study: Conduct a bat study during E-Bike Pilot period.
- G. Norther Spotted Owl (NSO): The District will continue annual NSO monitoring on the Watershed.

# Mt. Tamalpais Watershed Road and Trails Management Plan





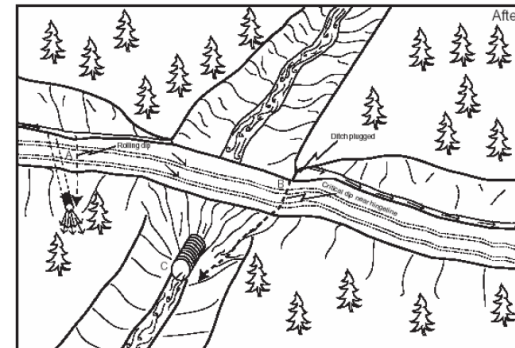
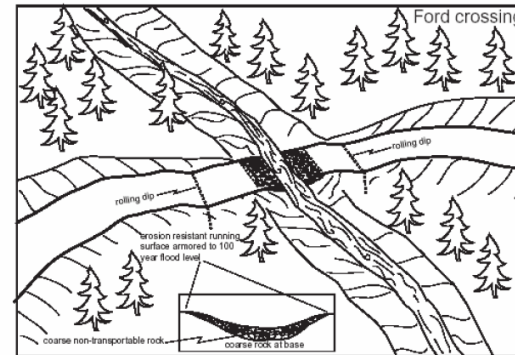
# Roads and Trails Management Plan

## Goals

1. To improve water quality and minimize sediment into the creeks and reservoirs.
2. To reduce the impact of the road and trail network on sensitive habitats, and special status plants and animals.
3. To reduce the impact of the road and trail network on the watershed's natural ecological function.

## RTMP Elements

- Road & Trails Classification
- Road and Trail Design Standards
- Work Plan Guidelines
- Best Management Practices & Environmental Measures
- Signage, Public Information and Outreach



## Roads Classification

Classification	Road Type	Characteristics	Miles
Class I	Paved Roads	High traffic volumes, year round access to critical facilities, main ingress and egress routes for the Watershed.	17.6
Class II	All Season Unpaved Roads	Receive regular use, typically have hardened surfaces, provide access to important water infrastructure and for important Watershed management.	44.2
Class III	Seasonal Unpaved Roads	Serves as emergency and recreational access. Typically, unsurfaced, narrower than Class I and II roads. Closed to vehicle traffic in the winter.	24.5
Class IV	Small Vehicle, Unpaved Roads	Primary use for patrol and route connectivity. Unsurfaced. Some sections only passable with small vehicles (i.e. ATV quads or small "bobcat" sized tractors). Limited truck and heavy vehicle traffic. Seasonal closures may apply.	4.5
Class V	Restricted Roads	Roads with special use restrictions (e.g. FAA facility)	3.7
Total			94.5

## Trail Classification

Classification	Road Type	Characteristics	Miles
Class VI	Equestrian Trails	Substantial infrastructure improvements required to support use. Seasonal closures may apply.	17.8
Class VII	High Use Hiking Trails	Hikers only. High to medium level of use and maintenance. Can be an important trail connector. Infrastructure improvements consistent with use levels.	26.2
Class VIII	Moderate Use Hiking Trails	Hikers only. Medium to low level of use. Not an important trail connector. Little to no trail infrastructure improvements. Seasonal closures may apply.	11.8
Class IX	Backcountry Trails	Hikers only. Low level of use. Minor maintenance. Not important trail connectors. Rustic-style trail infrastructure improvements only. Typically farthest from parking areas and towns.	1.7
Class X	Reserved	This classification reserved for future use.	n/a
Total			57.5

# Roads and Trails Management Plan: Past Work

Districts implementation of the RTMP:

- Initial work focused on reducing sediment inputs into salmonid bearing streams (upper Lag Creek & Redwood Creek watersheds).
- Established project restore program to address social trails and support decommissioning and restoration.
- Guided decommissioning of redundant fire roads.
- Addressed hydrological connectivity along fire roads through installation of BMPs, and improving stream crossings.
- Improved fire road surfaces and clearance to maintain access to critical water distribution facilities and for emergency response.
- Maintained trails as needed and addressed critical failures.





# Roads and Trails Management Plan: Current Work

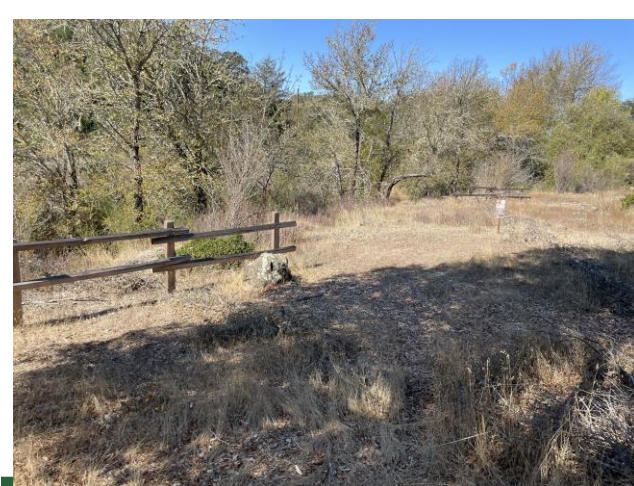
- Working to replace and enhance 105 watershed culverts.
- Targeted maintenance of fire road and trail system.





# Roads and Trails Management Plan: Current Work

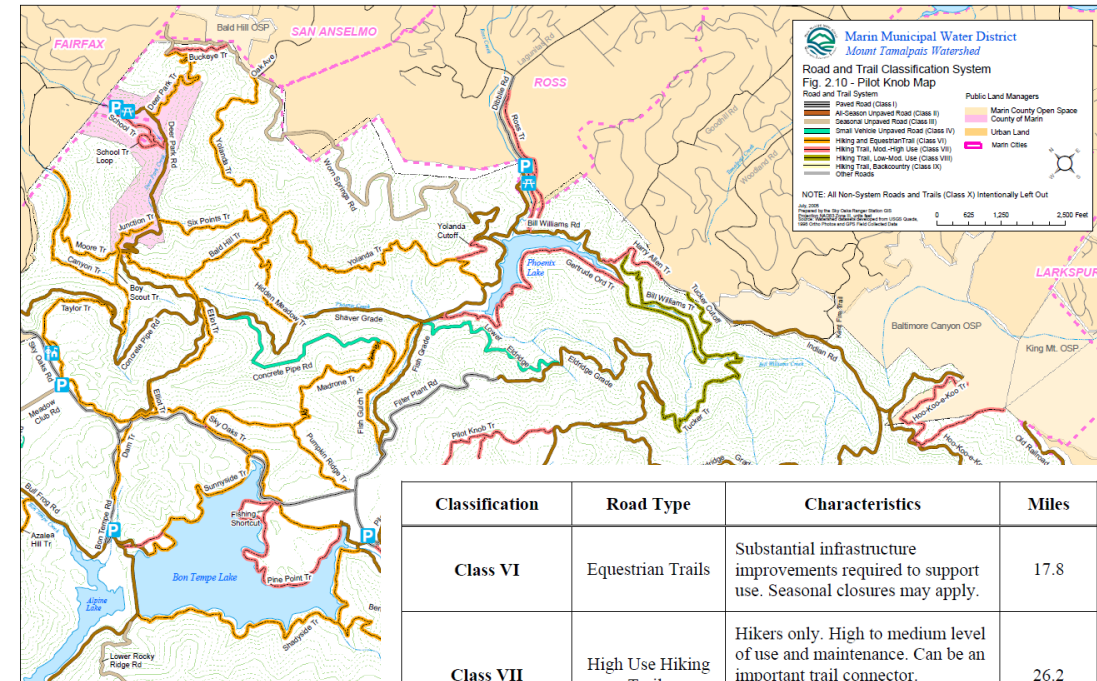
- Amendment to RTMP for Azalea Hill IS/MND
- Azalea Hill multi use trail construction
- Azalea Hill Hiking Trail
- Azalea Hill social trail restoration





# Roads and Trails Management Plan Update

- Update social trail restoration priorities
- Update Trail Classification to include bike access for Class X
- Retain roads and trails design standards
- Establish bike trail standard
- Update Work Plan with targeted geography scope, and outcomes
- Expand stewardship through integrating WRMP Feasibility Study



Classification	Road Type	Characteristics	Miles
Class VI	Equestrian Trails	Substantial infrastructure improvements required to support use. Seasonal closures may apply.	17.8
Class VII	High Use Hiking Trails	Hikers only. High to medium level of use and maintenance. Can be an important trail connector. Infrastructure improvements consistent with use levels.	26.2
Class VIII	Moderate Use Hiking Trails	Hikers only. Medium to low level of use. Not an important trail connector. Little to no trail infrastructure improvements. Seasonal closures may apply.	11.8
Class IX	Backcountry Trails	Hikers only. Low level of use. Minor maintenance. Not important trail connectors. Rustic-style trail infrastructure improvements only. Typically farthest from parking areas and towns.	1.7
Class X	Reserved	This classification reserved for future use.	n/a
Total			57.5

# Roads and Trails Management Plan Update

- September 18<sup>th</sup> Watershed Committee Meeting: RTMP Update Preliminary Workshop for early public input
- Develop Request for Proposal for RTMP Update
- Establish consultant contract Fall/Winter 2025
- Kickoff RTMP planning work in Winter 2025/2026



# Next Steps

- E-Bike Class I Pilot
  - Initiating Bat monitoring work
  - Trail counters operational
  - Watershed visitor experience survey fall of 2025
- Initiate RTMP Update
  - September 18<sup>th</sup> Watershed Committee Meeting: RTMP Update Preliminary Workshop
  - Consulting contract for Board review in Fall/Winter of 2025



