

**From:** [Guy](#)  
**To:** [Guy](#)  
**Subject:** Latest short piece on Marin County demographics...  
**Date:** Thursday, September 21, 2023 5:41:37 PM

---

I focus on Marin, but I end up referring to the whole World.

Best,

Guy

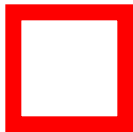
**From:** [Guy](#)  
**To:** [Guy](#)  
**Subject:** Marin demographics with the link... sorry about that  
**Date:** Thursday, September 21, 2023 5:56:06 PM

---

Here it is.

[https://link.edgepilot.com/s/afeaafe2/QD6521ZRVE2tBDYGOFzo\\_g?  
u=https://marinpost.org/blog/2023/9/21/marin-county-is-as-old-as-italy-if-not-japan](https://link.edgepilot.com/s/afeaafe2/QD6521ZRVE2tBDYGOFzo_g?u=https://marinpost.org/blog/2023/9/21/marin-county-is-as-old-as-italy-if-not-japan)

G.



## Blog Post



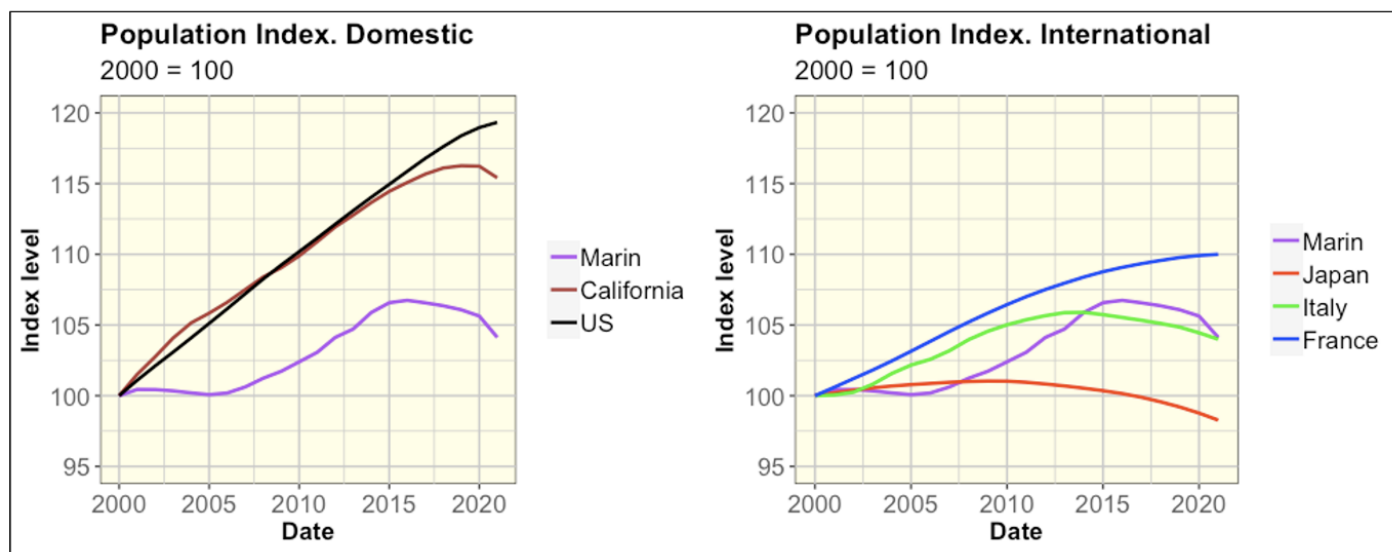
Guy

[MARIN COUNTY](#) | [GOVERNMENT AFFAIRS & POLITICS](#) | [SCIENCE & TECHNOLOGY](#)

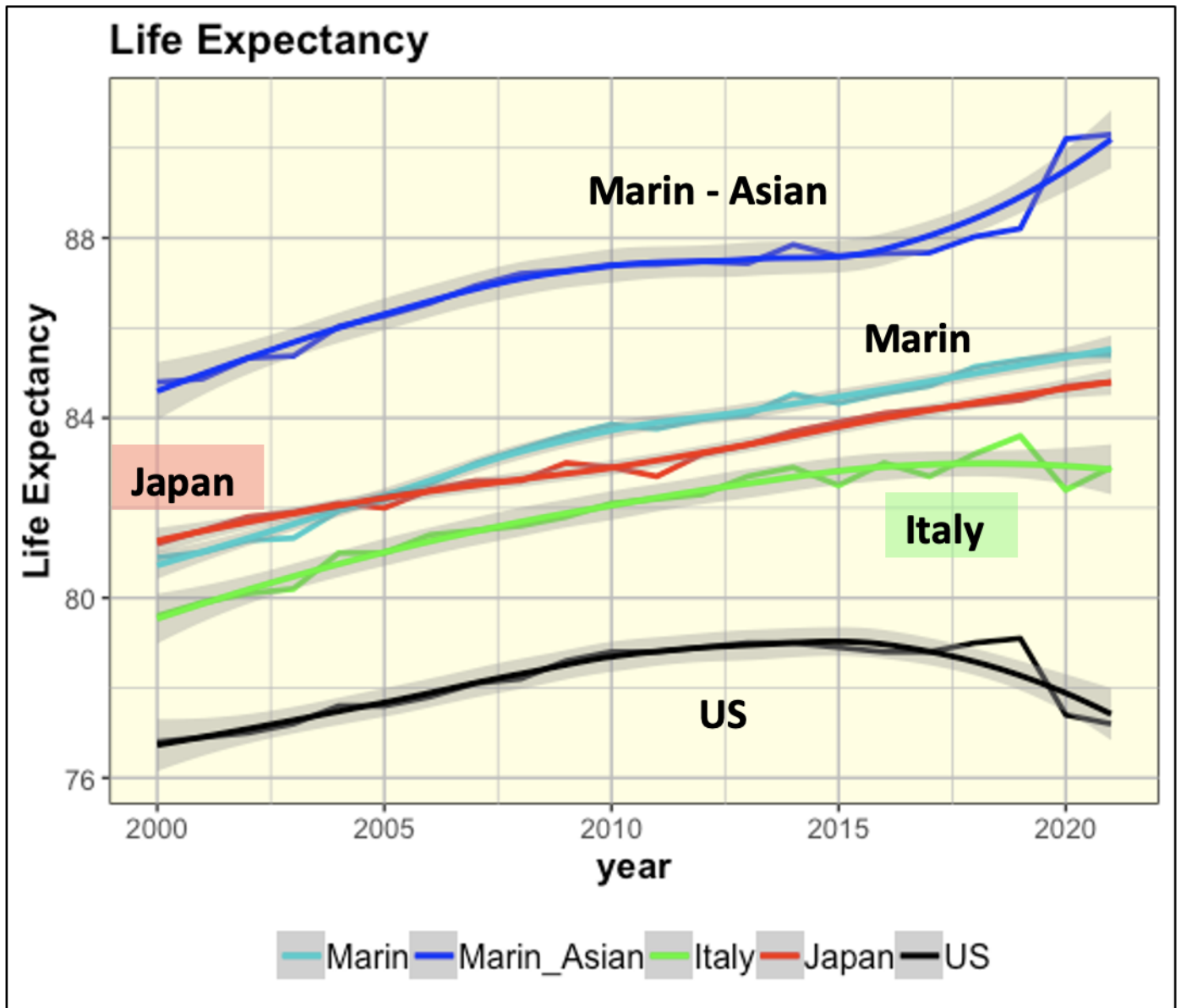
### Marin County is as "old" as Italy if not Japan

Posted by: [Gaetan Lion](#) - September 21, 2023 - 5:32pm

Based on my earlier research at [Generating a Marin County population projection](#), I knew that Marin County was "old" in terms of demographics. This is because, since 2000, Marin County's population has grown much slower than either California or the US (left-hand graph below). Its population growth is better aligned with Italy (right-hand graph below).



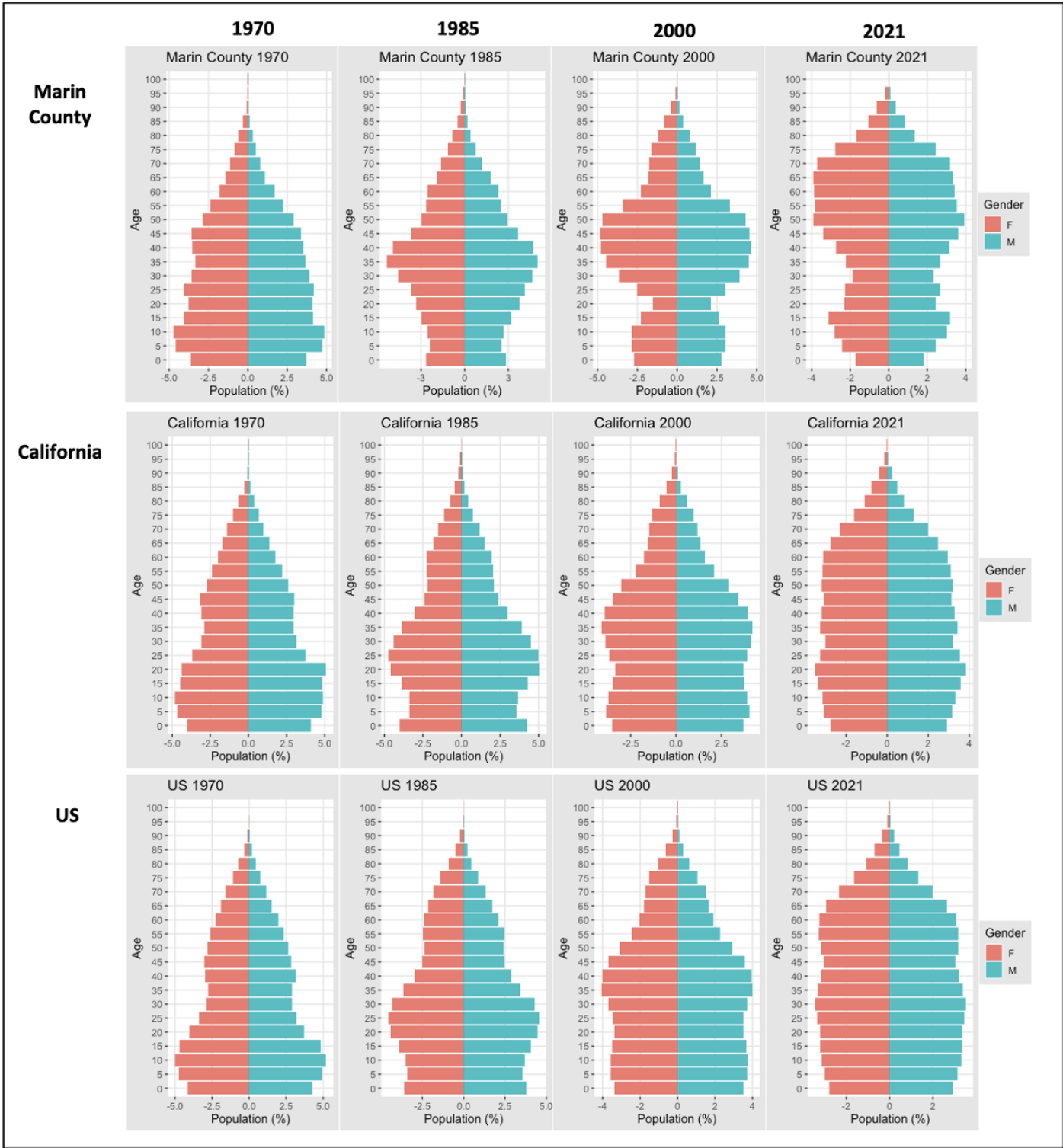
Additionally, Marin County's life expectancy is way longer than the US. It is even longer than the one for Italy or Japan. See more on the subject here [Is Marin County a Blue Zone?](#)



Slow population growth combined with long life expectancy makes for old-looking age pyramid graphs.

**Marin's age pyramid is way older than California's or the US**

You can see that on the pyramid graphs below. Marin's pyramid already looked like an inverted urn by 2000 and even more so by 2021, indicating more older individuals and fewer younger ones. By comparison, both California and the US have maintained a relatively resilient proportion of youngsters.

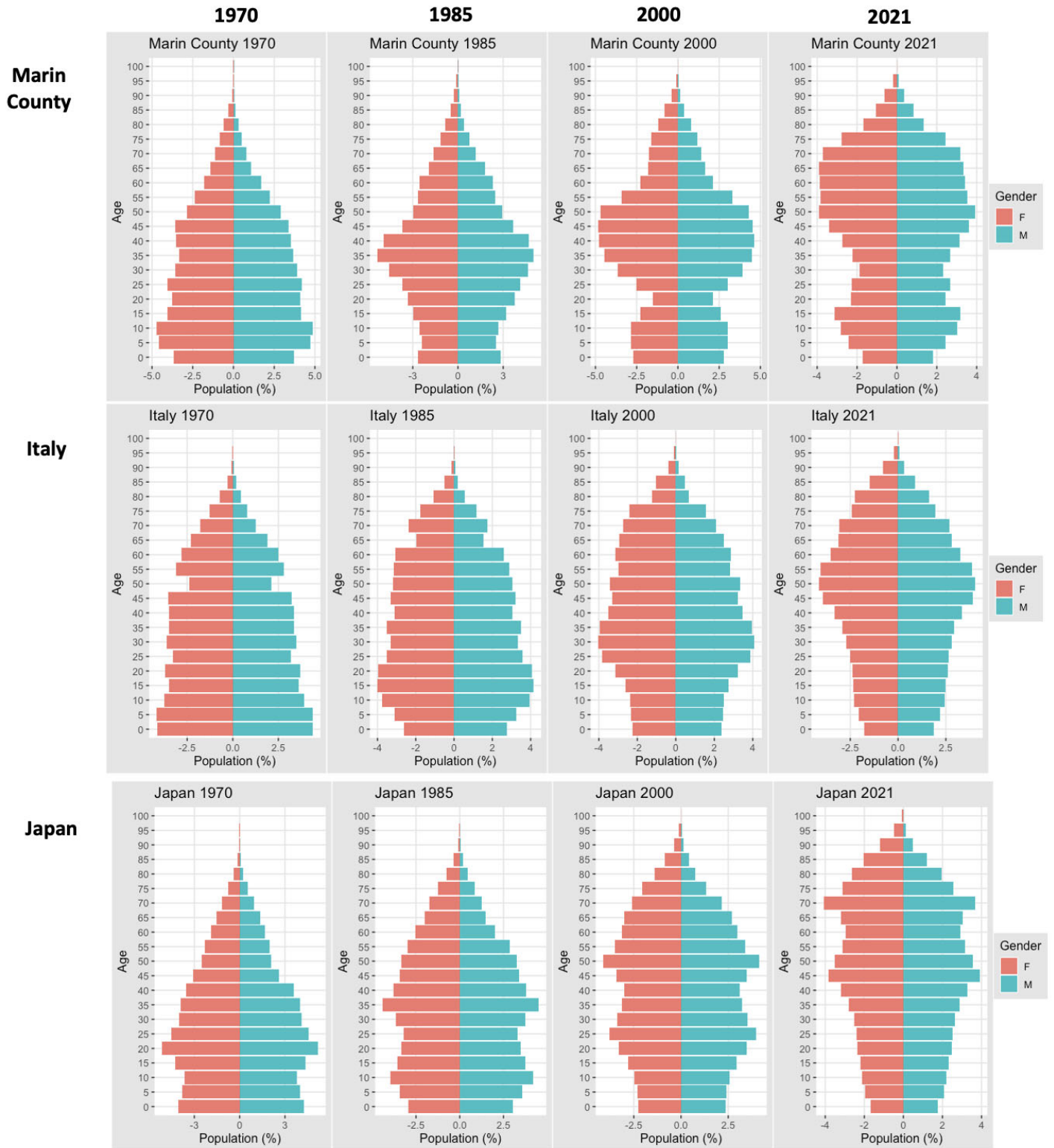


The main takeaways from the pyramid graphs above include:

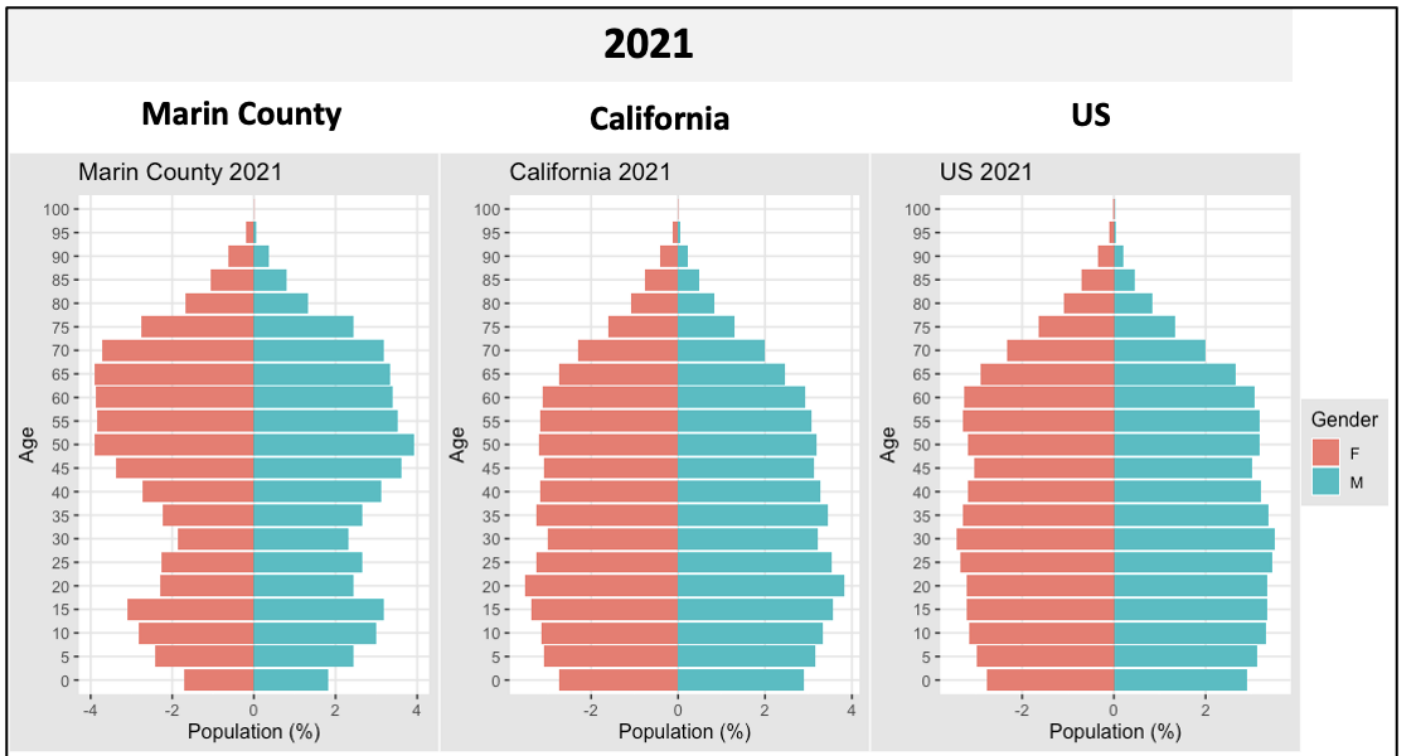
- Between 1970 and 2021, Marin has aged a lot faster than either California or the US;
- In 1970, Marin's pyramid is nearly as old as California or the US in 2021;
- In 1985, Marin's pyramid is already way older than California or the US in 2021;
- In 2021, Marin's pyramid is a lot older than either California or the US.

**Marin's age pyramid structure is very similar to Italy and Japan**

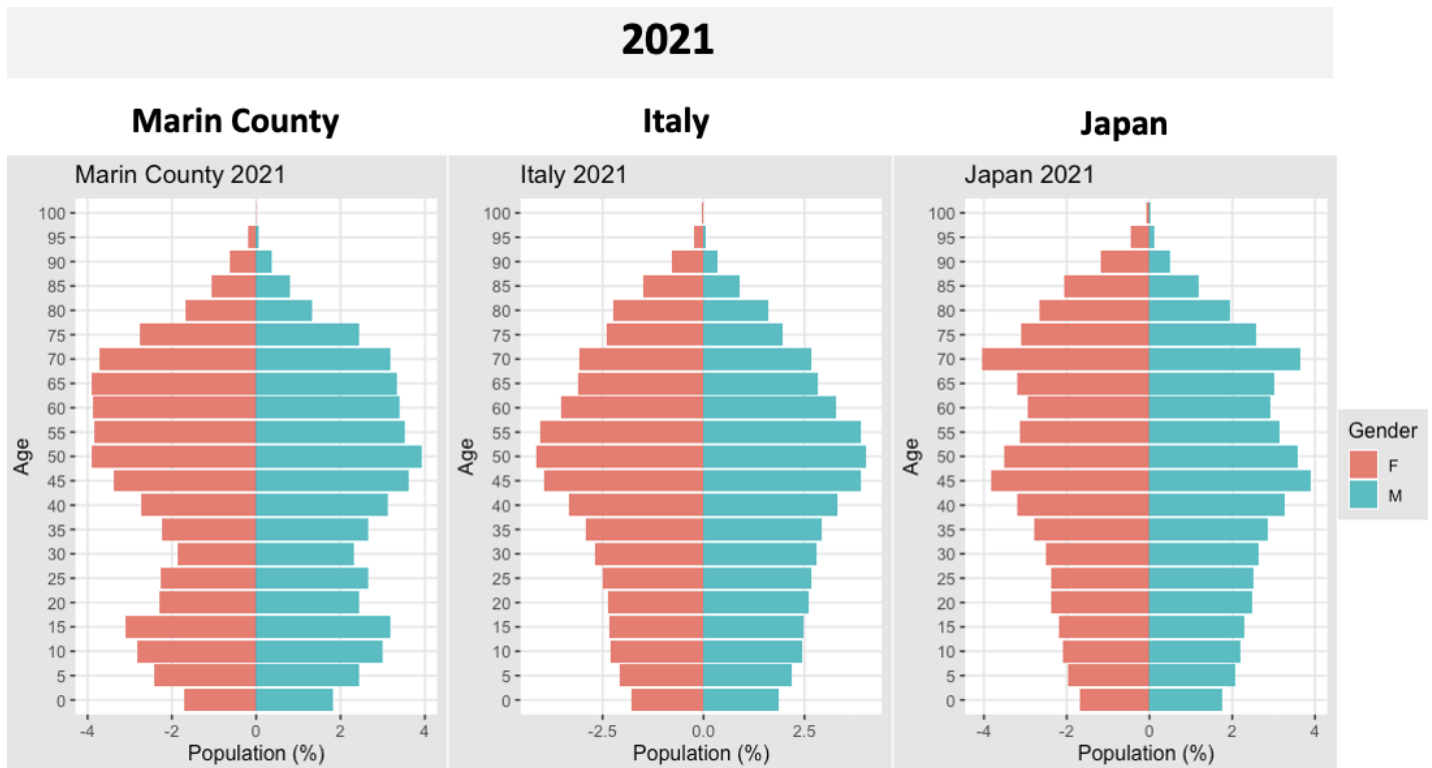
You can observe that by looking at the age pyramid graphs below.



When focusing on the most current data (2021), you see that Marin County is way older than either California or the US.



And, Marin County is similar to Italy and Japan.



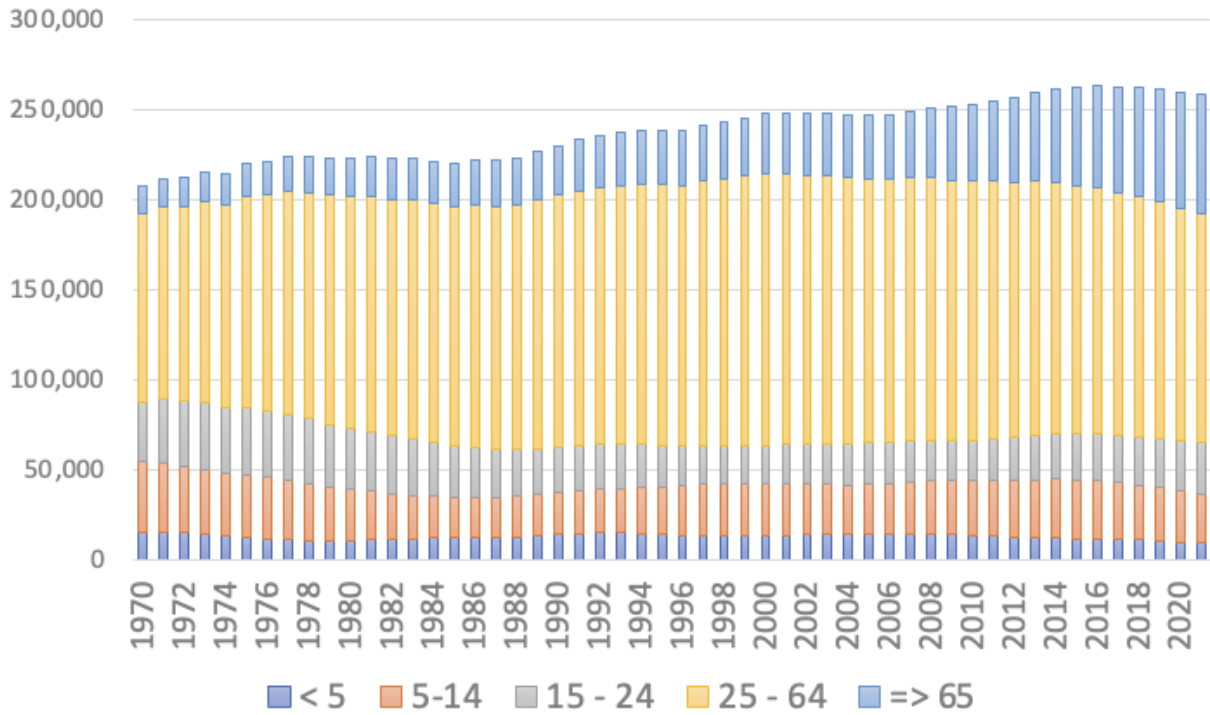
**Marin's wave graph is way older than California's or the US**

A wave graph is informative as it is the equivalent of consecutively aggregating yearly pyramid graphs from 1970 to 2021 or 51 pyramid graphs! And, the wave graph gives you information on the yearly population change of each age tranche over time.

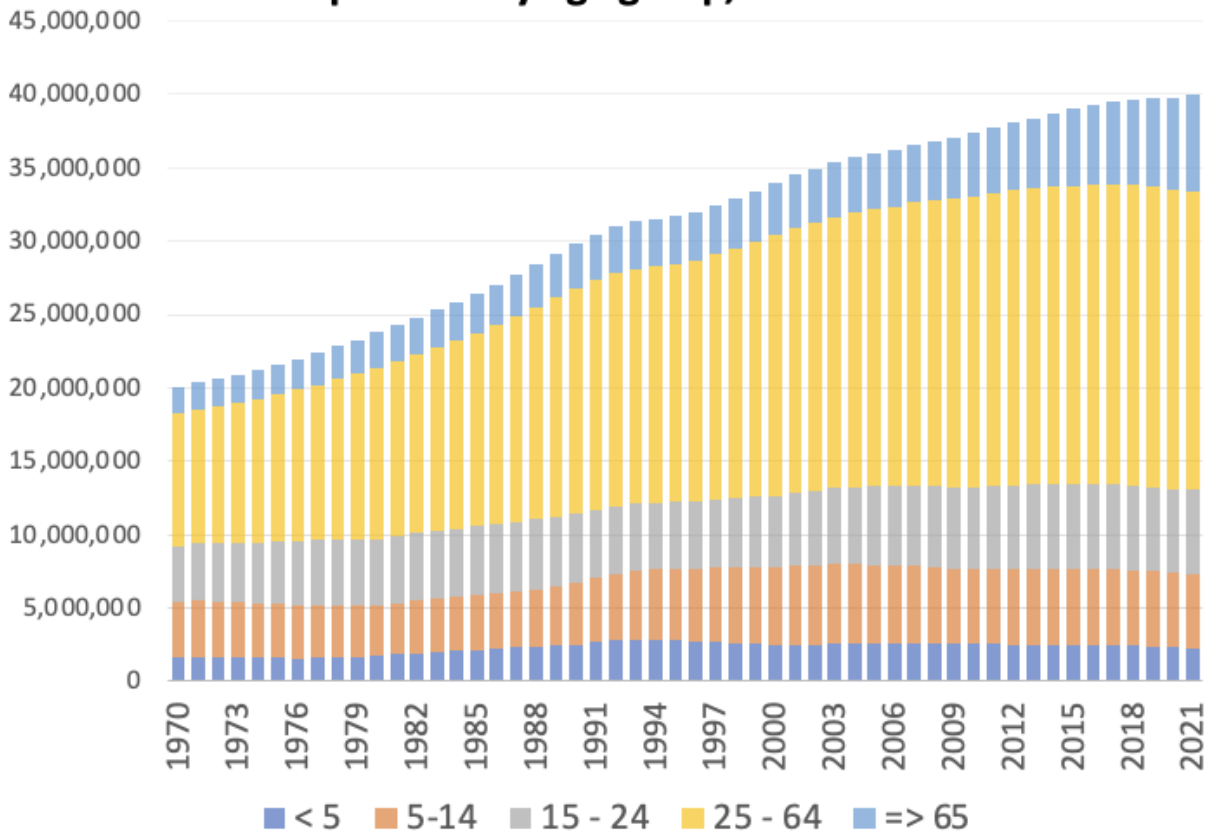
The wave graphs below confirm that Marin is way older than California or the US.



### Population by age group, Marin County

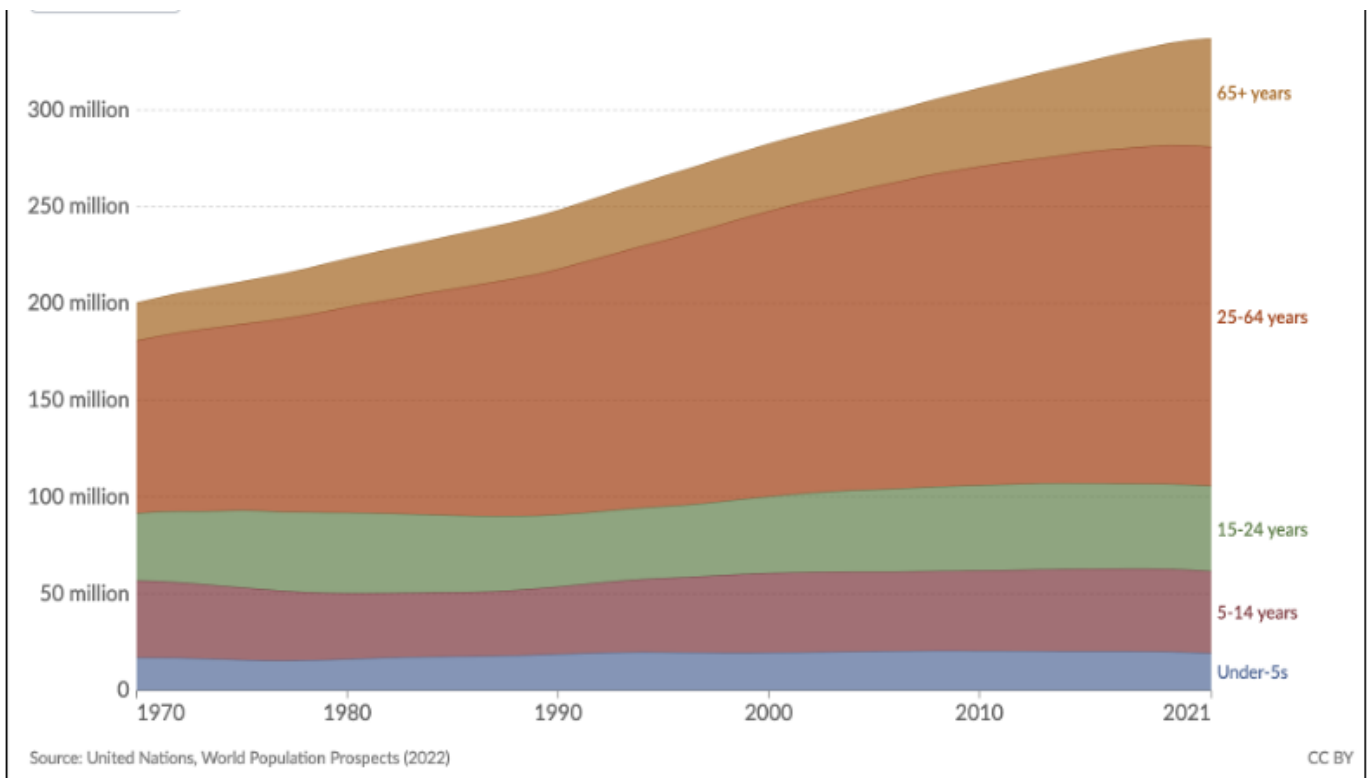


### Population by age group, California



Population by broad age group, United States, 1970 to 2021

All together ▾

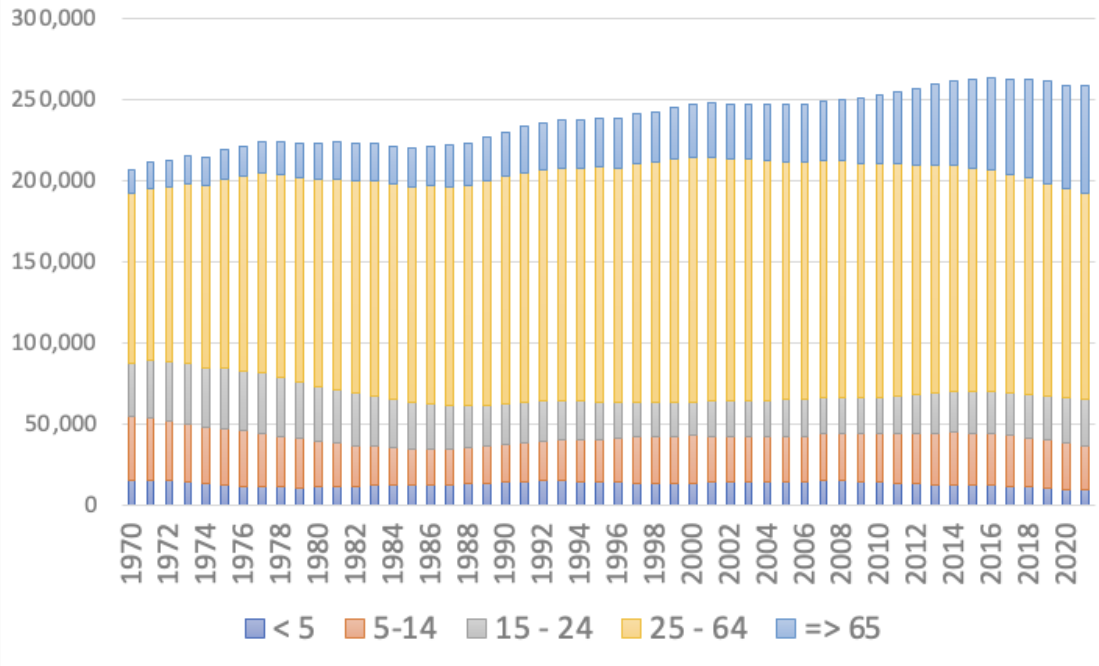


Main takeaways from the above wave graphs:

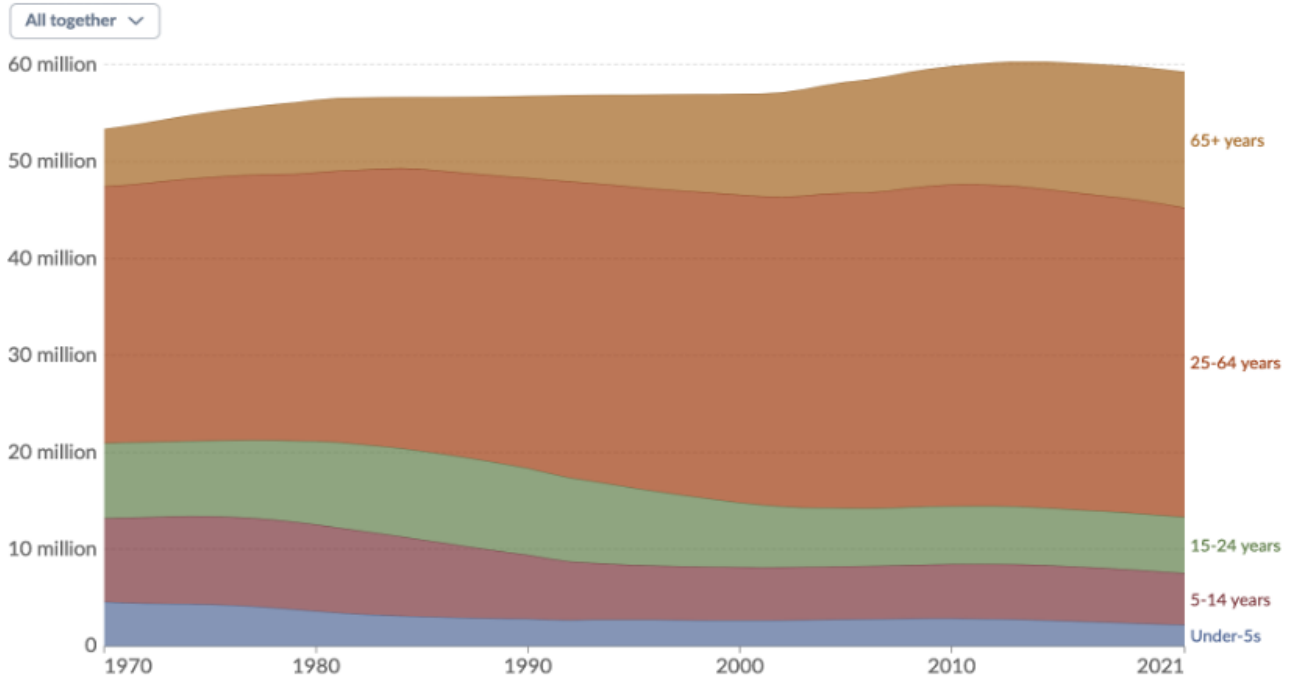
- Notice how Marin's population has grown a lot less than either California or the US. You can see that Marin's wave graph has remained relatively flat since 1970;
- On a relative basis, over time Marin's tranche of 65 years old and above has become so much thicker than for California or the US;
- On a relative basis, over time Marin's tranches of 24 years old and younger have narrowed; Meanwhile, it is not so much the case for California and the US.

**Marin's wave graph is very similar to Italy and Japan**

### Population by age group, Marin County



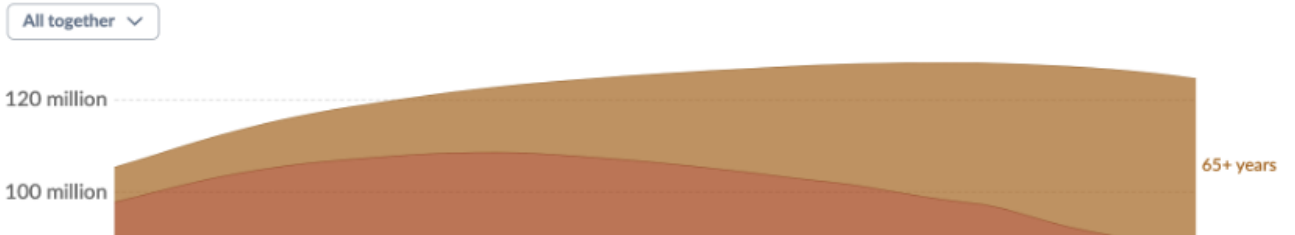
### Population by broad age group, Italy, 1970 to 2021



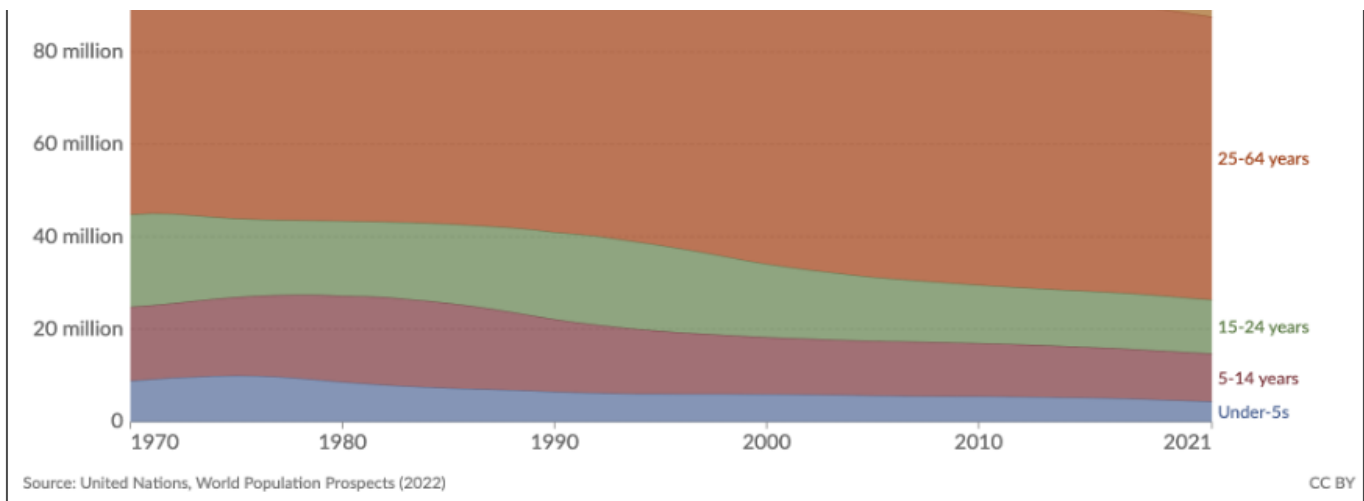
Source: United Nations, World Population Prospects (2022)

CC BY

### Population by broad age group, Japan, 1970 to 2021



Our World in Data



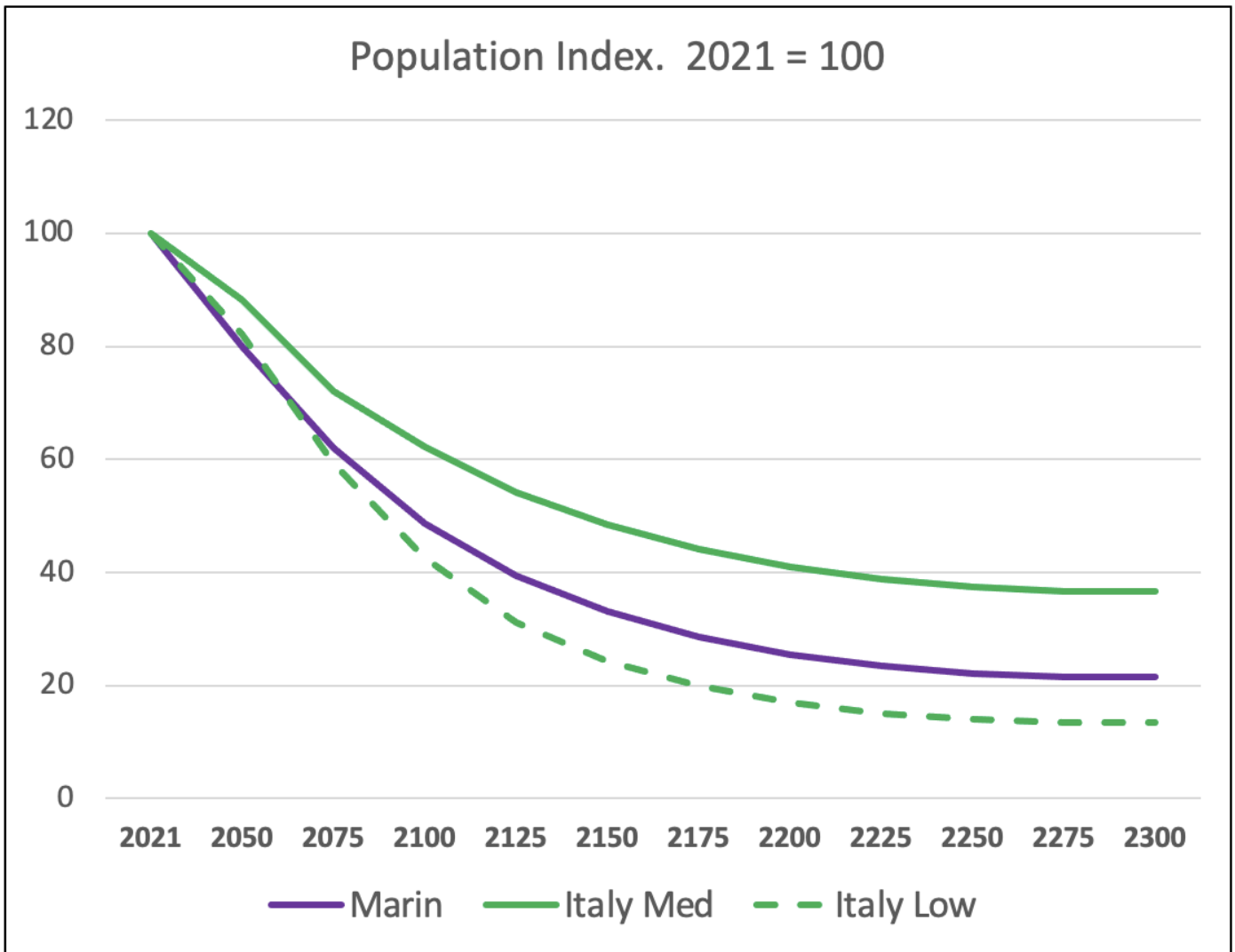
Main takeaways from the above graph:

- The wave graphs for Marin County and Italy have nearly identical shapes with very similar relative proportions of the different age tranches;
- Japan's wave graph is a bit different than the other two. Notice how rapidly the tranche of the 65 + has thickened;
- Notice that all three wave graphs indicate that the respective populations have already peaked, and are currently already declining.

### Long-term population prospect

These three regions with such rapidly aging pyramids and wave graphs are positioned to potentially experience a dramatic decline in population over the next two or three centuries. This is a prospect I modeled recently, including projecting Marin County's population and benchmarking it with a similar projection for Italy.

[Projecting Marin County population out to 2300](#)

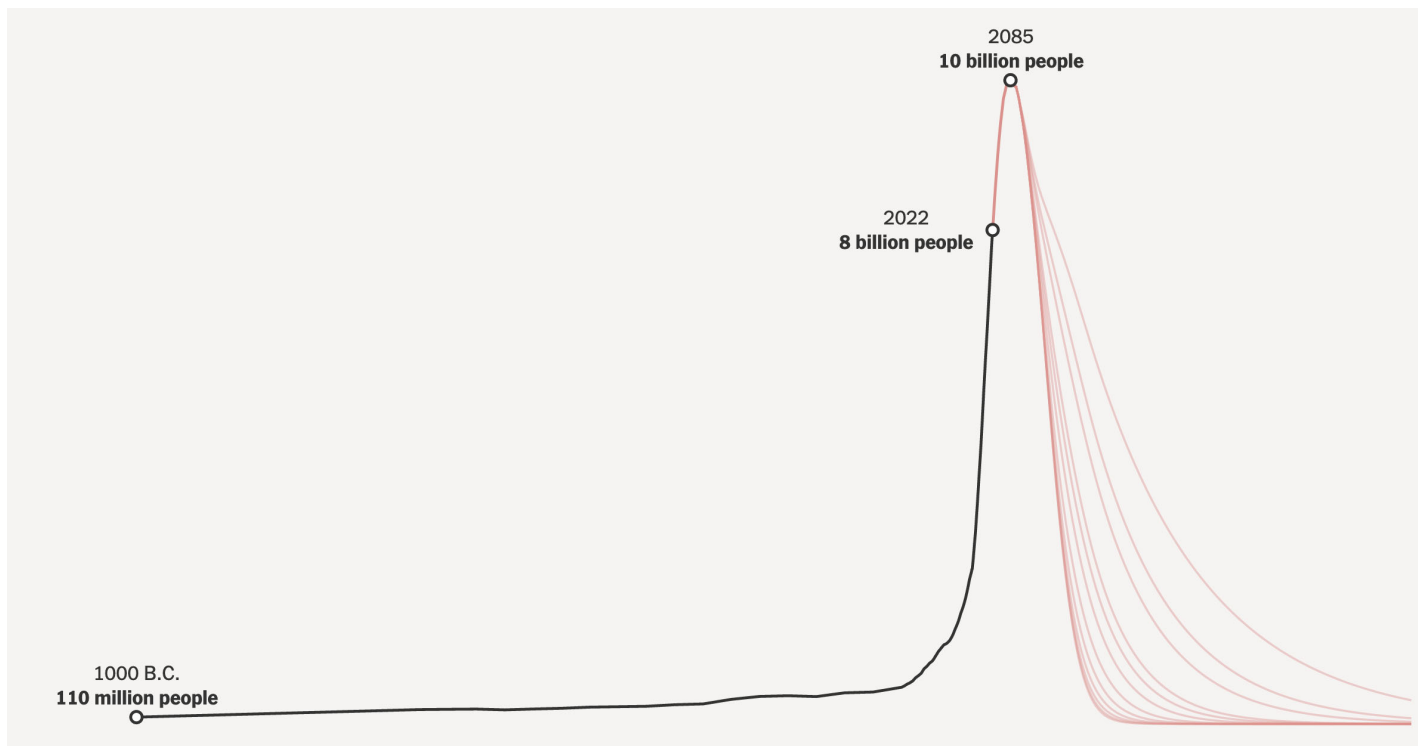


A prospective long-term precipitous decline in population is not limited to Marin County and Italy, it is a common possibility throughout much of the developed World. For more on the subject:

[Will China, Japan, and other countries make it to 2300?](#)

[NYT article on the prospective decline in the World's population](#)

The NYT article published the following graph (describing the prospective path of the World's population) that pretty much said it all.



---

## Tags

demographics, population decline, Marin County, Italy, Japan

---

# What do you think?

0 Responses



Upvote



Funny



Love



Surprised



Angry



Sad

## 0 Comments

 Login ▼

G

Start the discussion...

LOG IN WITH

OR SIGN UP WITH DISQUS 

Name



Share

Best Newest Oldest

DONATE

## Terrie Gillen

---

**From:** Bret Uppendahl  
**Sent:** Wednesday, September 27, 2023 10:33 AM  
**To:** Terrie Gillen  
**Subject:** FW: Water Supply Target Reserve Level

Hi Terrie,

See below from Ed Jameson. You may want to add this to the comments folder for 9.28 FAC.

-Bret

---

**From:** Ed Jameson <ed\_jameson@yahoo.com>  
**Sent:** Tuesday, September 26, 2023 9:28 PM  
**To:** Larry Russell <lrussell@marinwater.org>; Monty Schmitt <mschmitt@marinwater.org>; Ranjiv Khush <rkhush@marinwater.org>; Jed Smith <jsmith@marinwater.org>; Matthew Samson <msamson@marinwater.org>  
**Cc:** Ben Horenstein <bhorenstein@marinwater.org>; Bret Uppendahl <buppendahl@marinwater.org>  
**Subject:** Water Supply Target Reserve Level

Hello, Board members

Following are comments on this Thursday's September 28 Finance Board meeting about target Reserve levels:

Adding only \$2.5 Million annually to a present zero balance for water supply project reserves is grossly inadequate. Solving our water supply inadequacies will take many hundreds of millions of bond issuances, and we need to have a balance sheet to support that. In the meantime, we must not be tempted to fritter away our limited bonding capacity by using it to fund routine maintenance and repair projects.

- - Ed



## **Terrie Gillen**

---

**From:** chris staskus <cmstaskus@gmail.com>  
**Sent:** Wednesday, September 27, 2023 10:32 AM  
**To:** Board of Directors  
**Subject:** New Rate Increase

I am reaching out to express my shock and deep concern regarding the recent rate increase.

My understanding from your communications was that the rate would increase by an average of 20%. My most recent bill has gone up 50% compared to the same billing period last year with the same water consumption. My recent bill has also gone up 100% compared to the last billing period in 2023 while my consumption went up only 22% due to the extremely hot weather. I have contacted many of my neighbors and discovered that their recent bill has also increased by 50% as well with the same water use. These are both small, medium and large water consumers.

I find this totally unacceptable. I understand the need to increase our rates by a reasonable amount to pay for existing and future infrastructure but a 50% increase is ridiculous.

I would like to understand how you promote a 20% increase and apply a 50% increase. I would also like to understand what our options are to reduce these rates and still provide a financially sustainable water district.

I will also be reaching out to our county supervisors to investigate community options on this topic.

Regards,

Chris Staskus  
145 deer hollow rd, san anselmo  
650 799 2006