



**Marin County Fire Tam Crew  
and FIRE Foundry  
Memorandum Agreement**

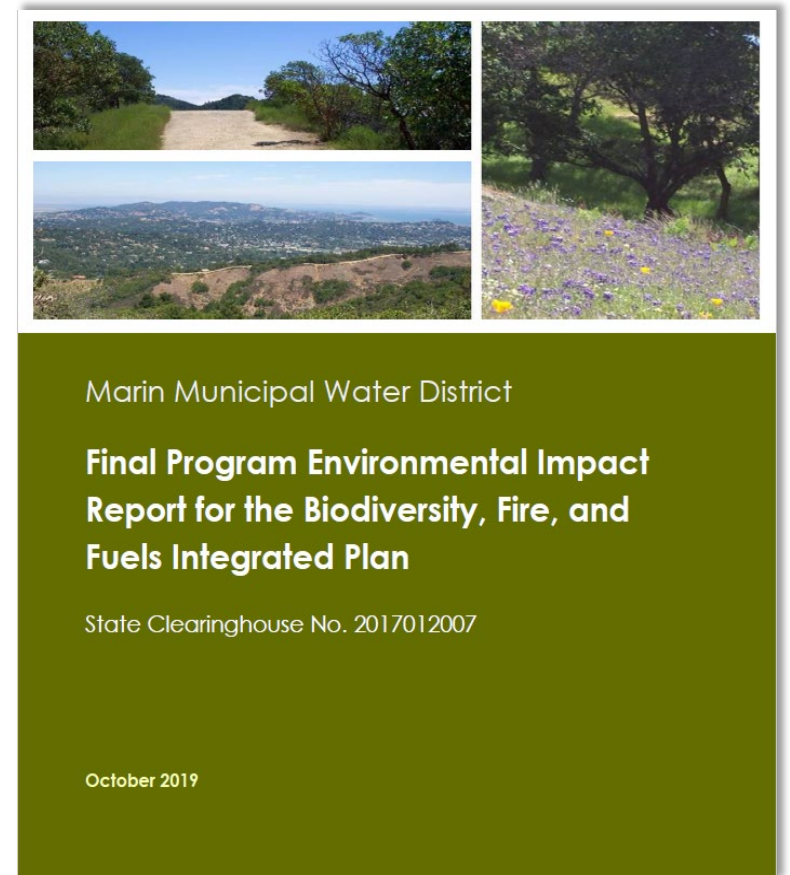
Board of Directors Meeting

February 13, 2024

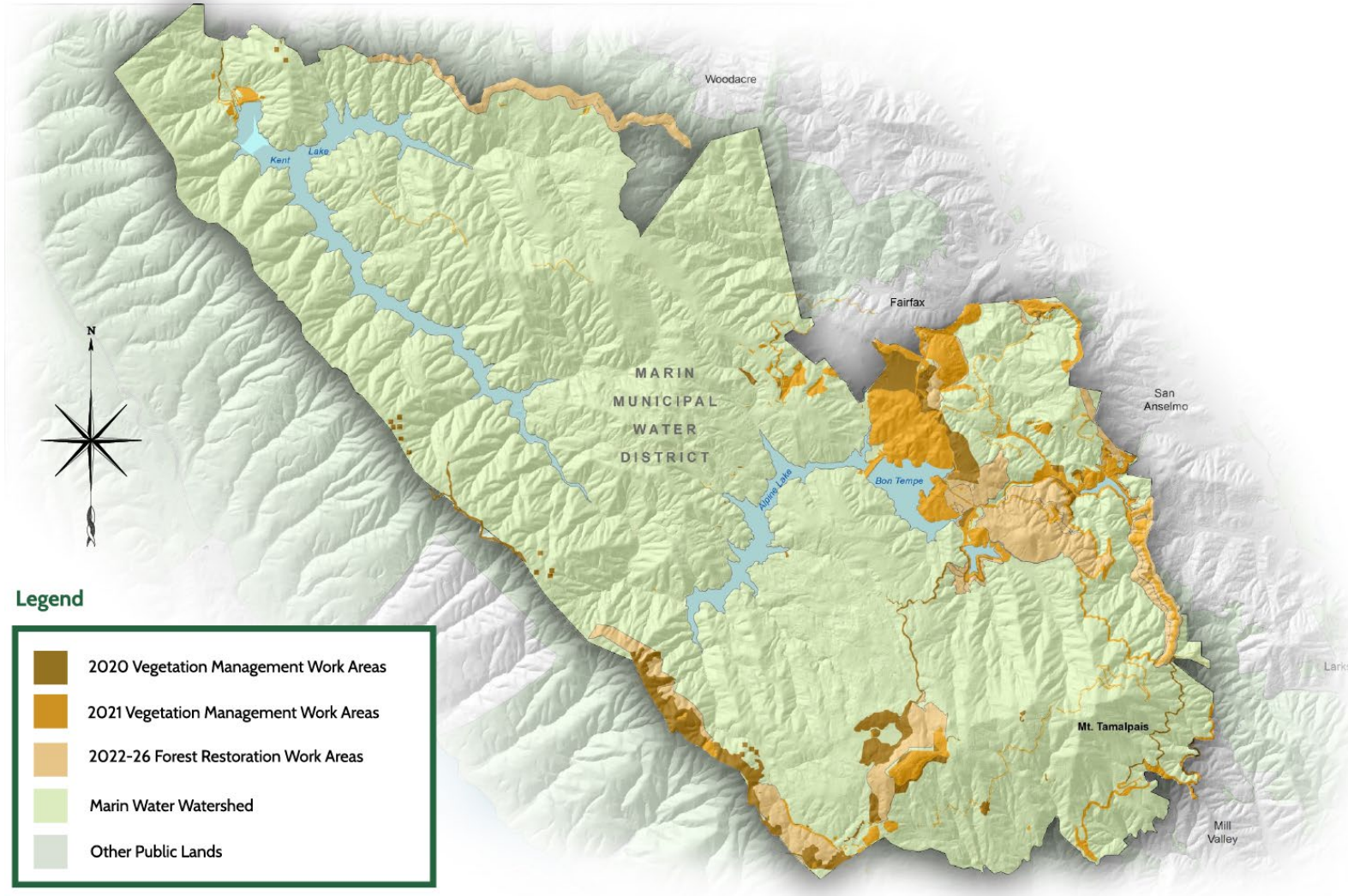


# Background on BFFIP and CEQA Review

- Biodiversity, Fire, and Fuels Integrated Plan (BFFIP) completed in October 2019
- Final Environmental Impact Report approved on October 15, 2019
- Currently in 5<sup>th</sup> year of implementation



# BFFIP Work Areas



## BFFIP Management Actions

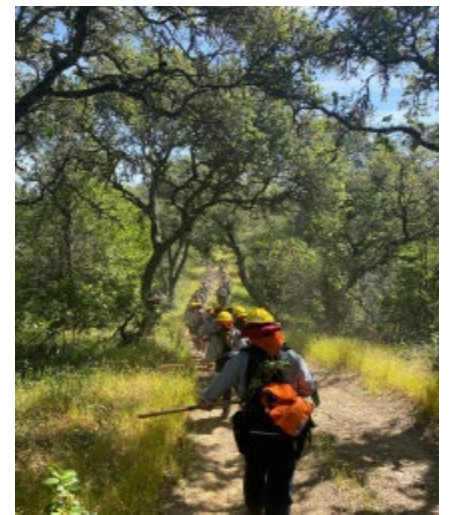
- Invasive broom management
- Pile burning
- Prescribed burning
- Forest restoration and fuel reduction
- Douglas fir abatement in grasslands and oak woodlands
- Fuelbreak maintenance and construction

# Fire Innovation, Recruitment, & Education (FIRE) Foundry

## What is FIRE Foundry?

- A workforce development and education program with the goal to support underserved and underrepresented individuals in navigating a pathway toward a sustainable wage career in the fire service or fire adjacent field.
- The Fire Foundry is a collaboration between community colleges, leading universities, California Conservation North Bay, and Marin County Fire agencies to tackle the fundamental challenges of developing a diverse workforce that will work to protect communities from catastrophic wildfire and conserve the environment.

<https://www.firefoundry.org/about>



# FIRE Foundry Overview

- Work force development program
- Crew training and education built into program through partnership with Marin Community College
- California Conservation North Bay acts as employer of record for crew members
- Marin County Fire provides mentorship and fire academy training
- FIRE Foundry adds crew capacity to support vegetation management work in Marin County



<https://www.firefoundry.org/about>

# FIRE Foundry Professional Development Training



## Workforce Development

- Chainsaw
- Chipper
- S130, S190, etc.
- Defensible space
- Open space
- Fire Department
- Health care
- Support services



## Education Program- College of Marin

- Fire Technology
- Kinesiology
- Emergency Medical Responder (EMR)
- Emergency Medical Technician (EMT)
- Trainings
- Counselors



## Professional Development

- Mentorship
- Hard skill trainings: CPR, Rope Rescue,
- Soft Skills: Mock interview, time management,



## Support Services Program

- Housing Support
- Food Support
- Mental health support
- Tutoring for EMR and EMT

# FIRE Foundry BFFIP Work



Fire road brushing and fuelbreak maintenance



Invasive French broom removal



Lake Lagunitas Forest Restoration



Lake Lagunitas Forest Restoration



Fuel reduction and broom removal

# Marin County Fire Tamalpais (TAM) Fire Crews

- 9 month seasonal crew
- Crew size consists of 14 firefighters
- Primarily a hand crew that supports vegetation management work and build firefighting skills
- Responds to wildland fires to support containment lines, hazardous trees and mop-up activities
- Adds capacity to support prescribed burn site preparation, implementation and mop-up





# Prescribe Burning



# Pile Burning

