



Water Supply Update

Board of Directors

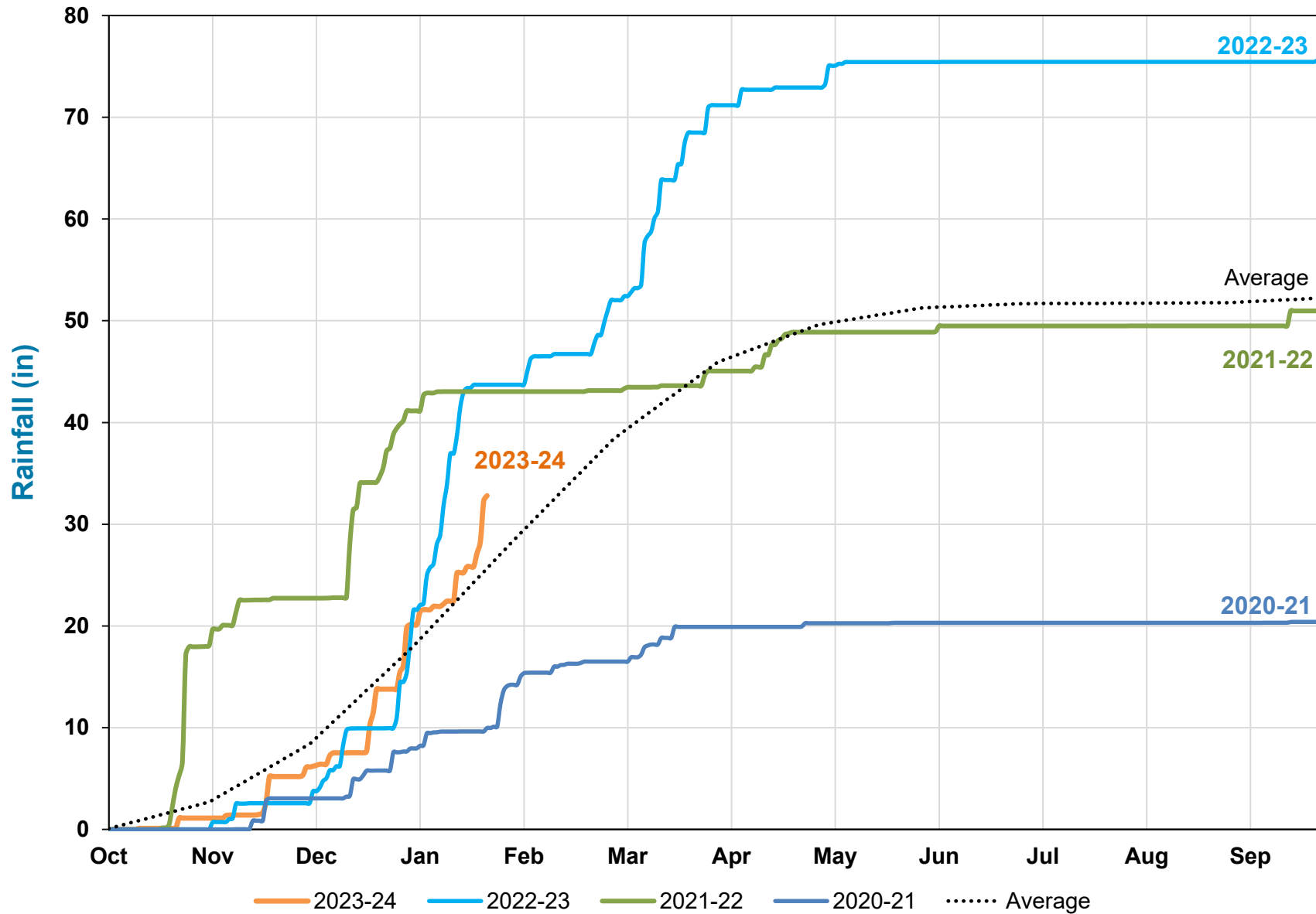
January 23, 2024



Overview

- Update on Water Supply Conditions
- Seasonal Forecast
- Water Supply Projection
- Summary

MMWD Cumulative Rainfall (Lake Lagunitas)

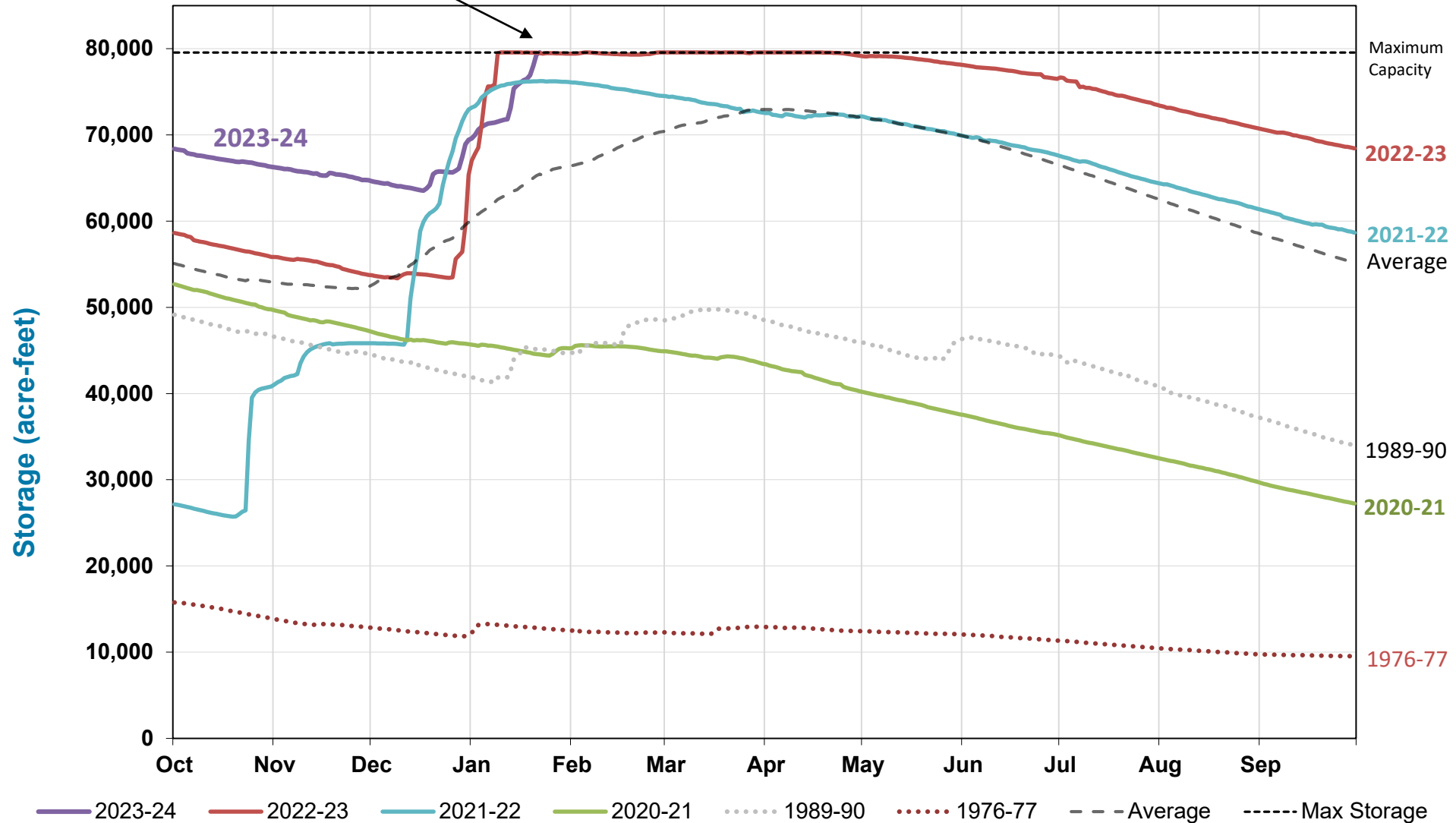


Total Water Year Rainfall
(1/23/2024): 32.8 in

122% of average for this
date

Total Reservoir Storage

1/22/2024: 100% Capacity



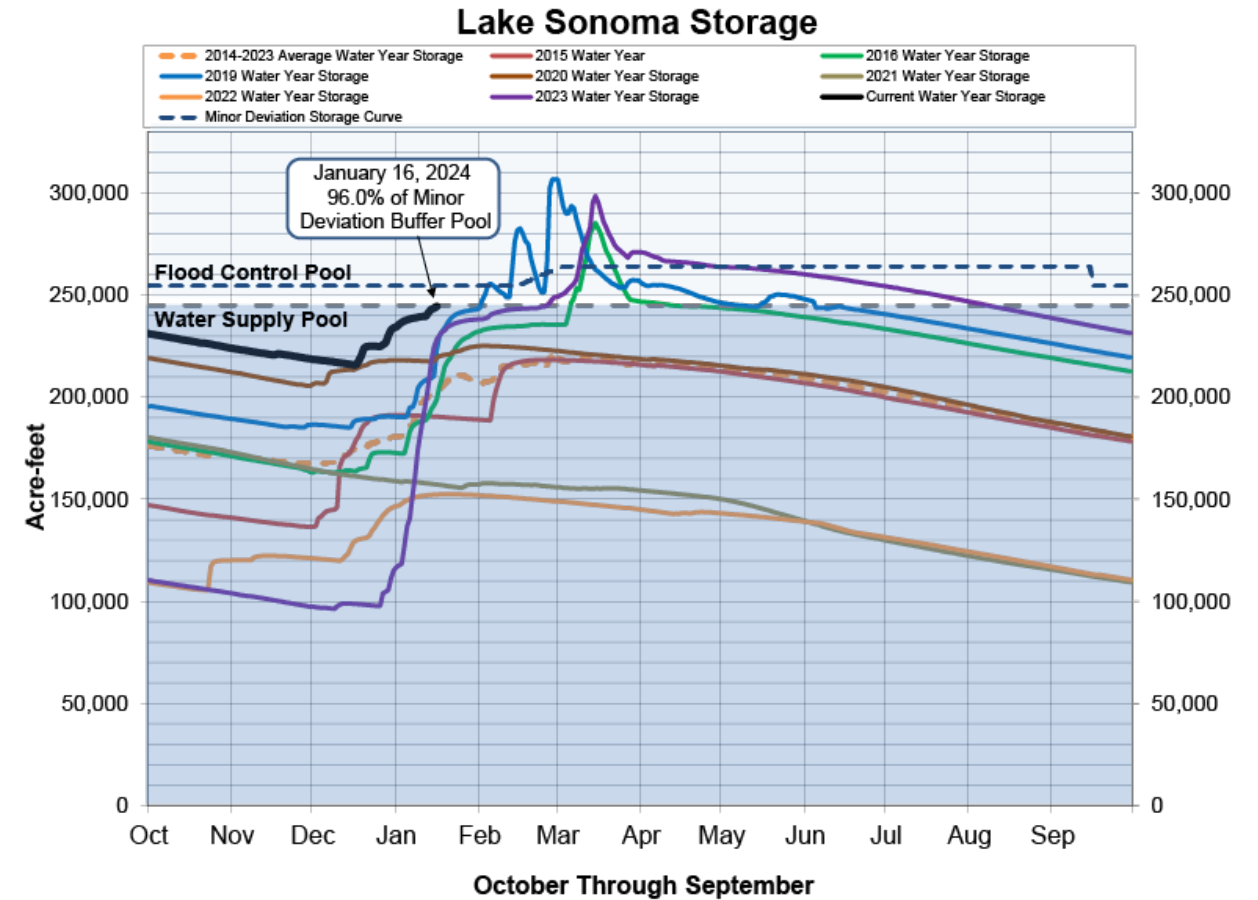
Sonoma Water Supply Conditions

Lake Sonoma

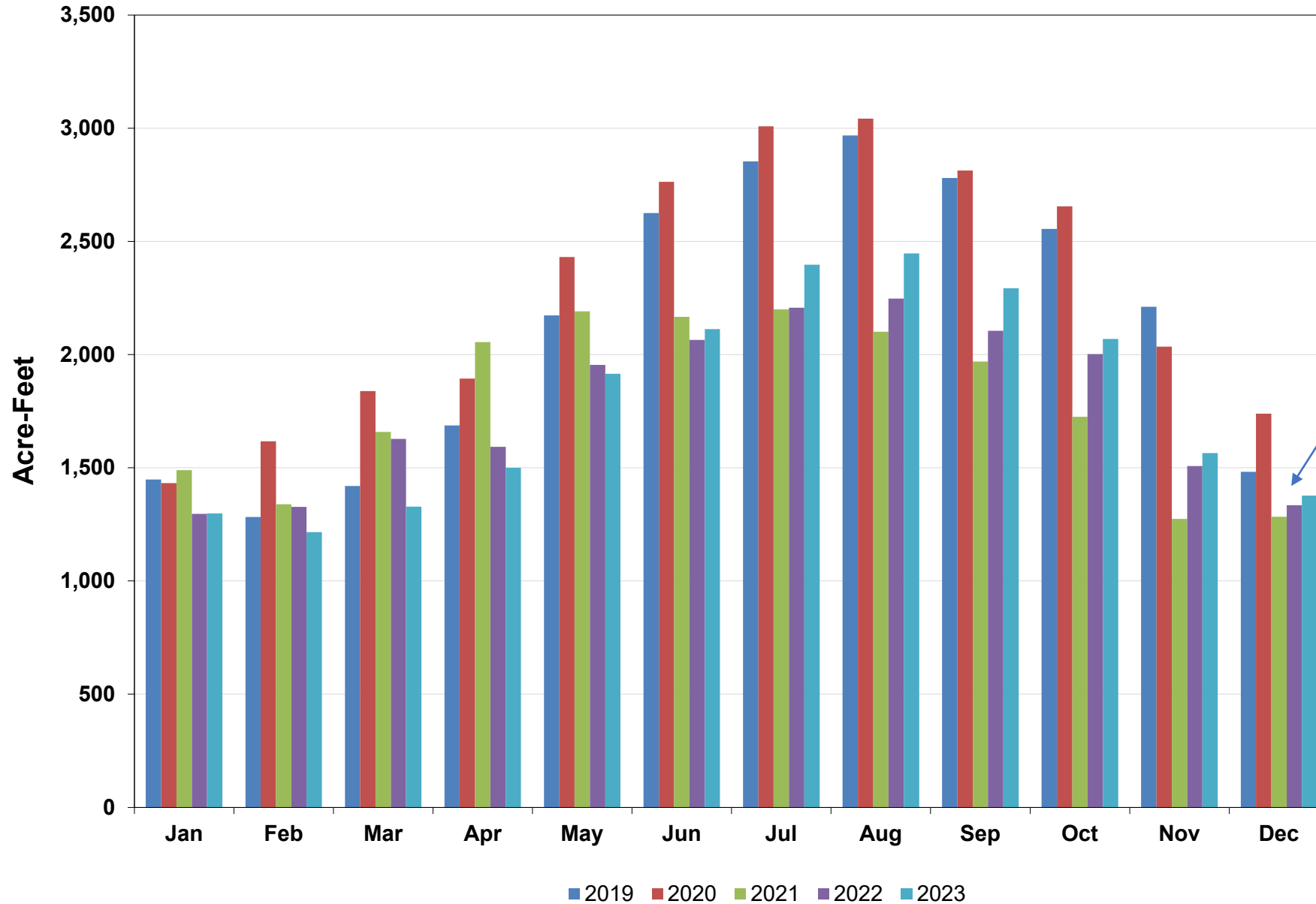
- 103% water supply pool (~120% of average)

Lake Mendocino

- 91% of water supply storage pool

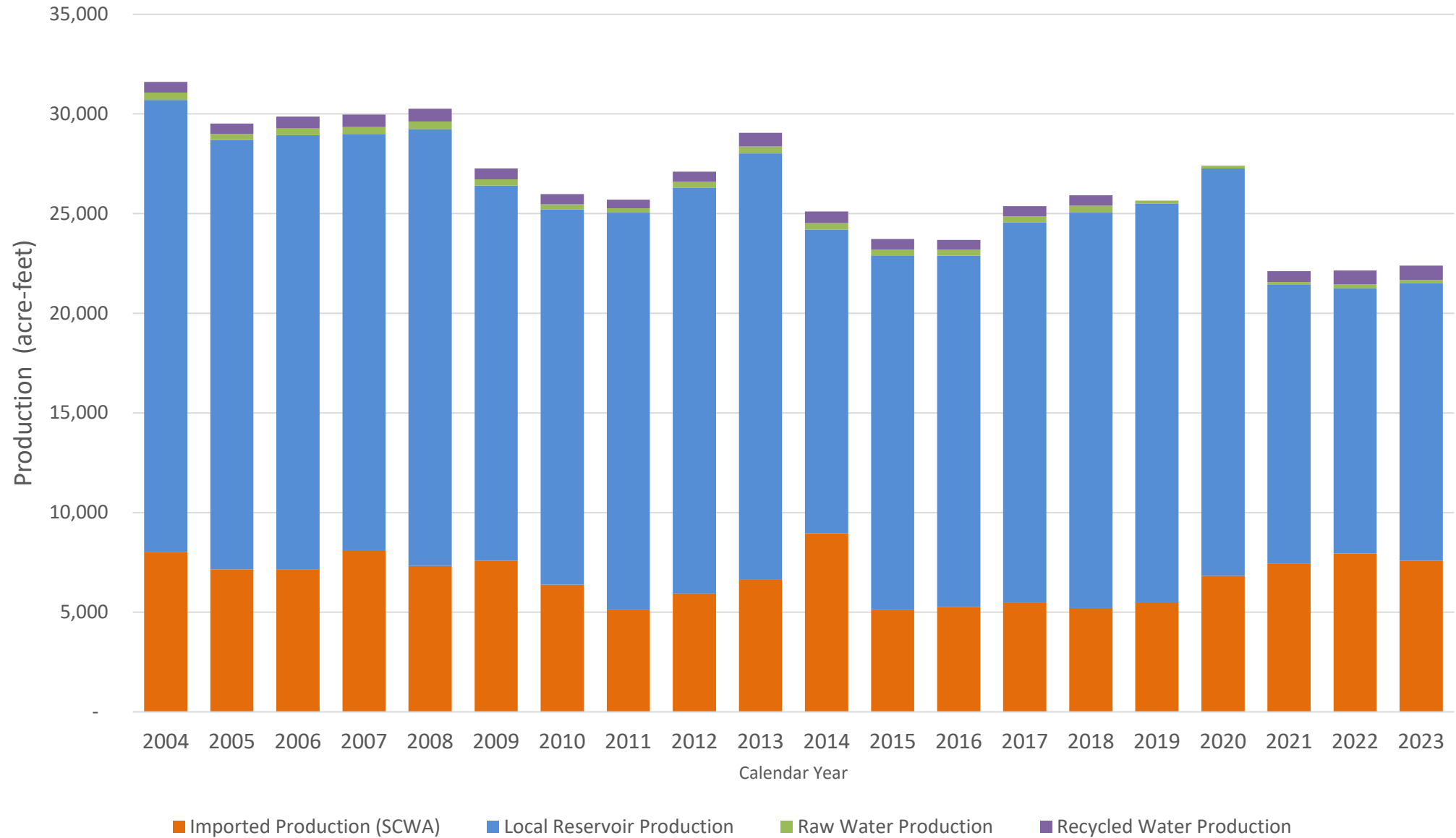


Monthly Potable Water Production



December production remains 21% below 2020 levels, but 3% higher than last year

Annual Total Water Production



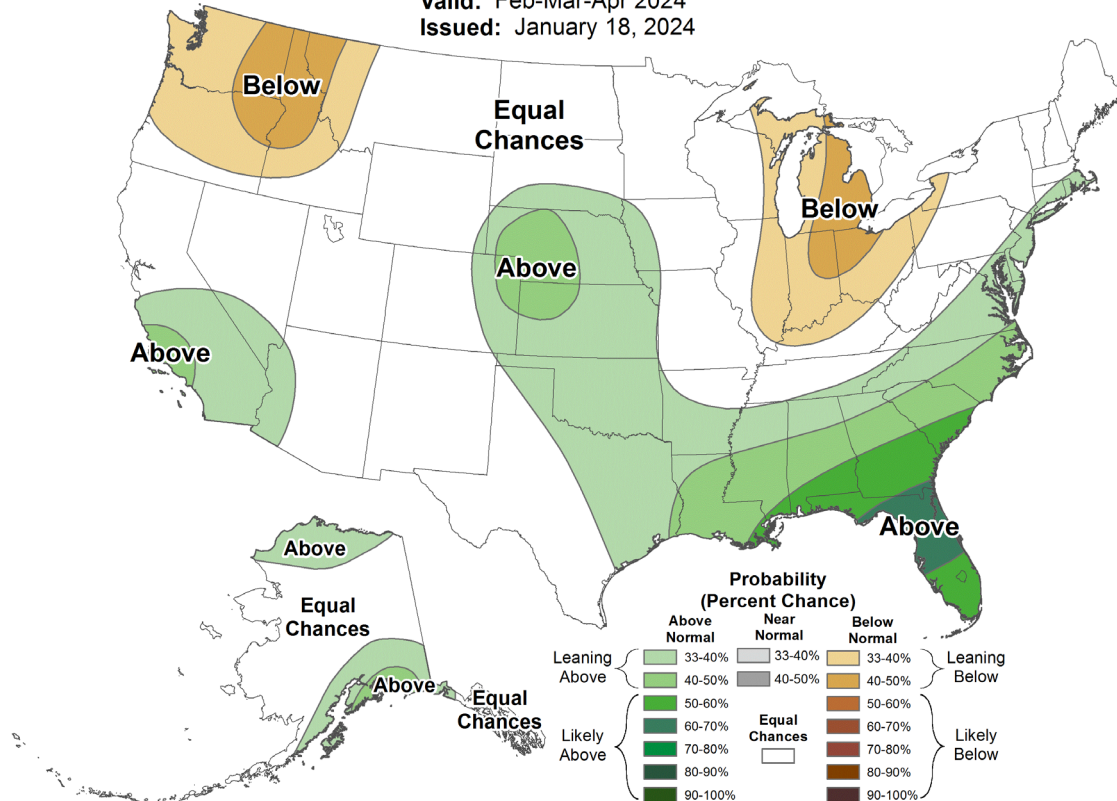
Seasonal Forecast: NOAA (Issued 1/18)



Seasonal Precipitation Outlook



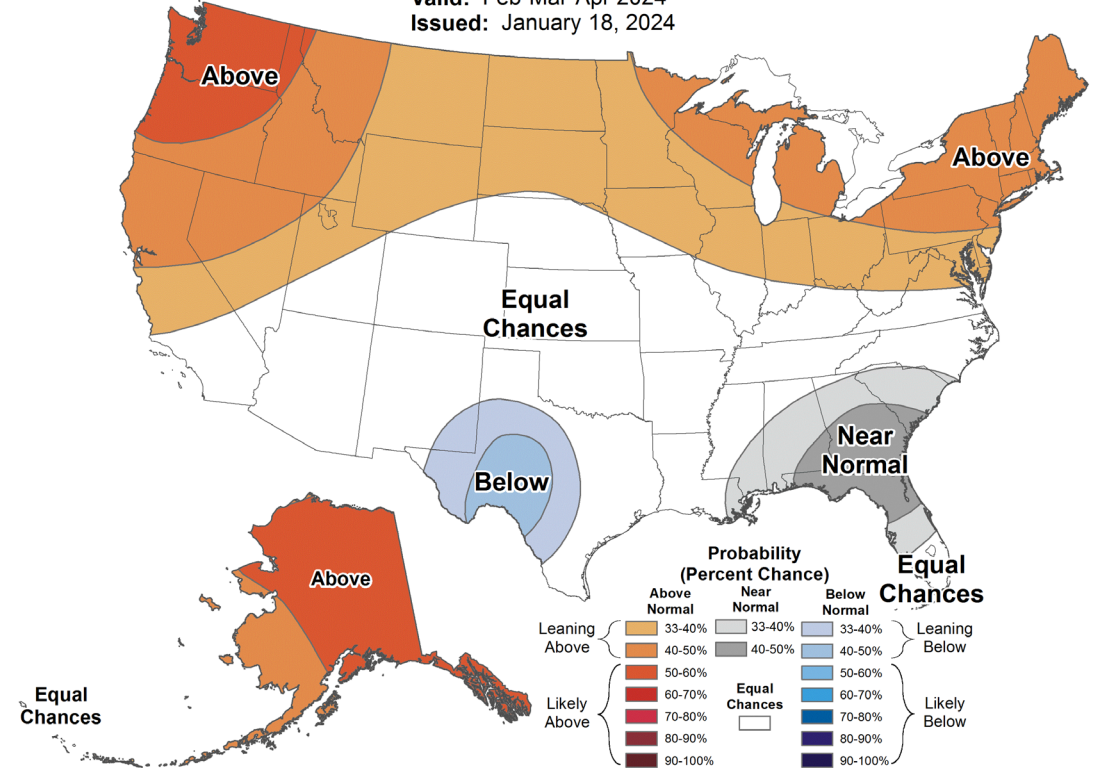
Valid: Feb-Mar-Apr 2024
Issued: January 18, 2024



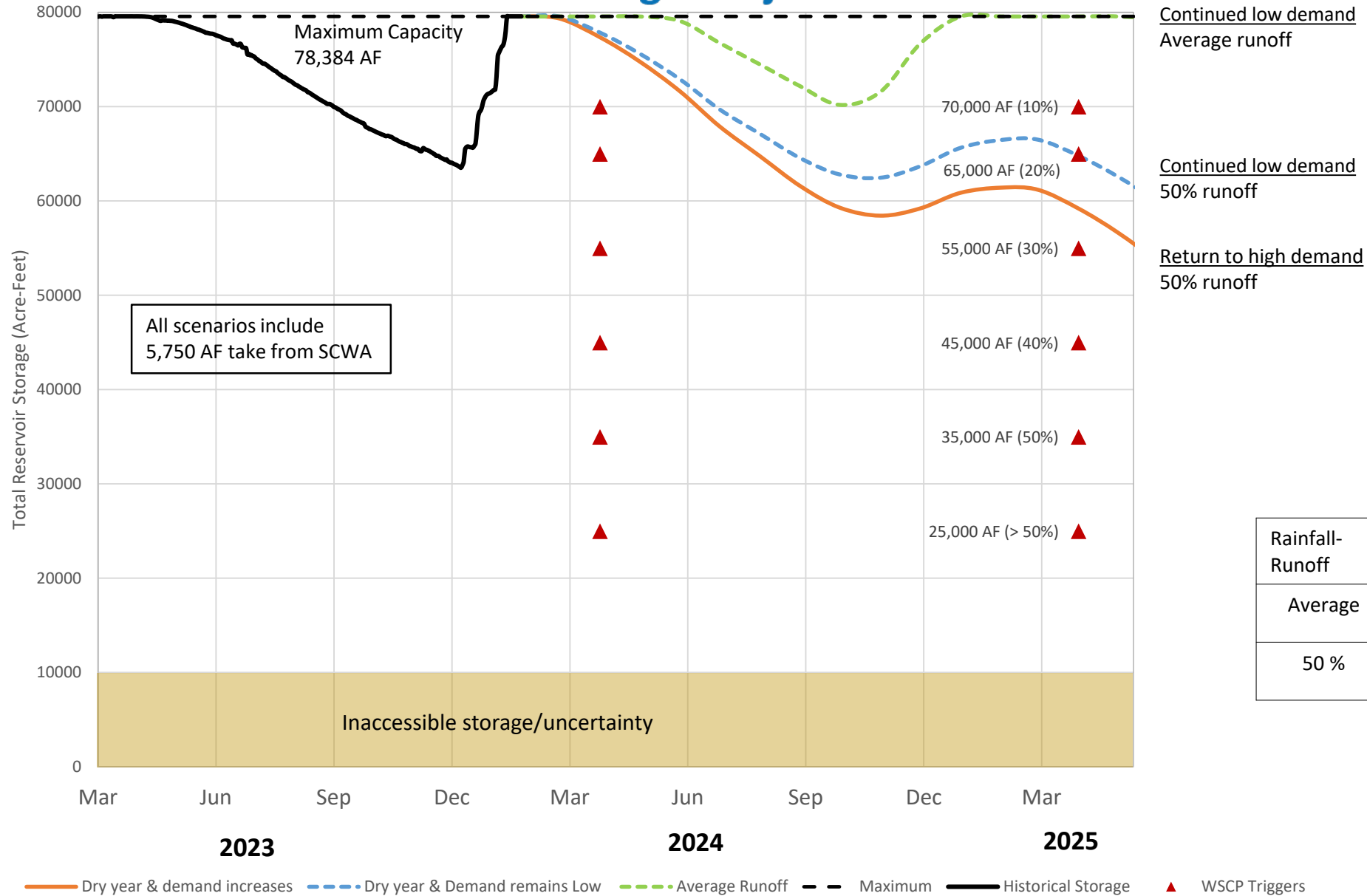
Seasonal Temperature Outlook



Valid: Feb-Mar-Apr 2024
Issued: January 18, 2024



Reservoir Storage Projections



Rainfall-Runoff	Total Rain (inches)	Correlated Runoff (ac-ft)
Average	52 in.	~85,000
50 %	26 in.	~17,000

Operational Strategy for WY 2024

- Maximized purchases of supplemental water from Sonoma early in summer/fall
- Favorable reservoir storage conditions support reduced purchases of supplemental water

Month	SCWA (Acre-feet)	Reservoirs (Acre-feet)
July	1,131	1,267
August	1,140	1,307
September	1,146	1,147
October	1,032	1,037
November	391	1,173
December	284	1,093
January (to date)*	137	645
Total	5,262**	7,670

*FY 2024 total through January 18, 2024.

**Minimum take from SCWA for FY 2024 is 5,750 acre-feet

Summary

- Reservoir storage started water year at highest historical level and trend has continued through winter months due to conservation, wet weather, and operational strategy
- Continue to monitor El Niño conditions and demand trends and keep Board apprised